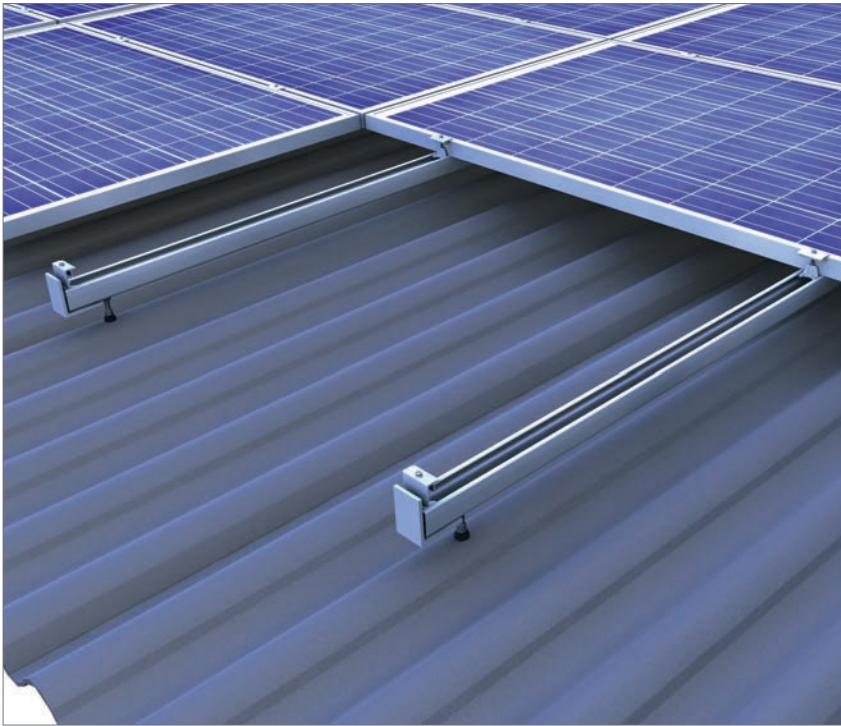


Corrugated and sandwich roof | clamping system

novotegra top-fix



novotegra top-fix – single-rail clamping system with modules installed in landscape

Your benefits

- Centric load distribution
- The C-rail also acts as a cable channel
- For wooden and steel purlins
- Secure, stable and durable
- High-quality production and proven clamping technology
- Only three clamps for all frame heights
- Also suitable for trapezoidal roofs
- Excellent rear ventilation of the module
- Simple, Eurocode-compliant layout with our Solar-Planit online tool



Type Approved
Regular
Production
Surveillance
www.tuv.com
ID 1111212187



Simple mounting system technology

When mounting on corrugated and sandwich roofs, you fix the photovoltaic installation directly to the purlins of the roof construction. For wooden purlins, you need the stock screw set for wood and for steel purlins the stock screw set for steel. The centric connection of the C-rails to the stock screw transfers the load centrally on the stock screw – this means that it is not additionally subjected to bending stress. C-rails are always mounted using the same principle: The classic screw connection with a locking nut ensures a quick, strong and permanently reliable connection for both single-rail and cross-rail connections. At the same time, the interior of the rail acts as a cable channel with enough room for cables and plugs. The connection of the stock screw to

the rail bottom makes height adjustment possible, and the installation can be levelled – this way you can achieve a homogenous module field, even on uneven roofs.

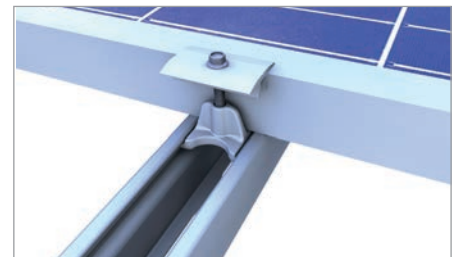
All end and middle clamps are pre-assembled and also available in a black anodised variant. Be it modules installed in portrait or landscape or a singlerail or cross-rail installation, thanks to reliable clamping technology, modules can be fixed to C-rails quickly and securely. The end clamps close the module field flush to the C-rails, making the substructure nearly invisible – for visually perfect installations.



Centric load distribution in to the stock screw

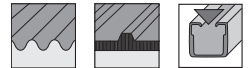


Cross-rail connection C-rail

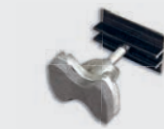


Middle clamp on C-rail

Clamping system



Middle clamp or end clamp



Item no. 03-000302



Item no. 03-000299



Item no. 03-000301



Item no. 03-000298

novotegra top-fix

End cap



Item no. 03-000259

Connector



Item no. 03-000001

Rail



Item no. 03-000291

Stock screw



Item no. 03-000222



Have you already seen it?

To our novotegra YouTube channel.
There you will find helpful videos for installation assistance.

BayWa r.e. Solar Energy Systems GmbH | Eisenbahnstrasse 150 | 72072 Tuebingen, Germany
Phone +49 7071 98987-0, Fax +49 7071 98987-10, solarenergysystems@baywa-re.com
www.baywa-re.com, solar-distribution.baywa-re.de, novotegra.baywa-re.com