



Smart Accessory Instruction Manual





SF-SLRELAY-BT



Packing List

- Fingerprint controller * 1



- Screws * 4



Parameters

Model	G200 (Main door opener)
Unlocking method	App unlock/Fingerprint(with F100)/Password(with F101)
Material	Plastic
Installation	Screw fixing
Size	112x36x18mm
Weight	80g
Battery	2*AA(Alkaline)
Endurance	1 year

APP Installation & Use Tutorial

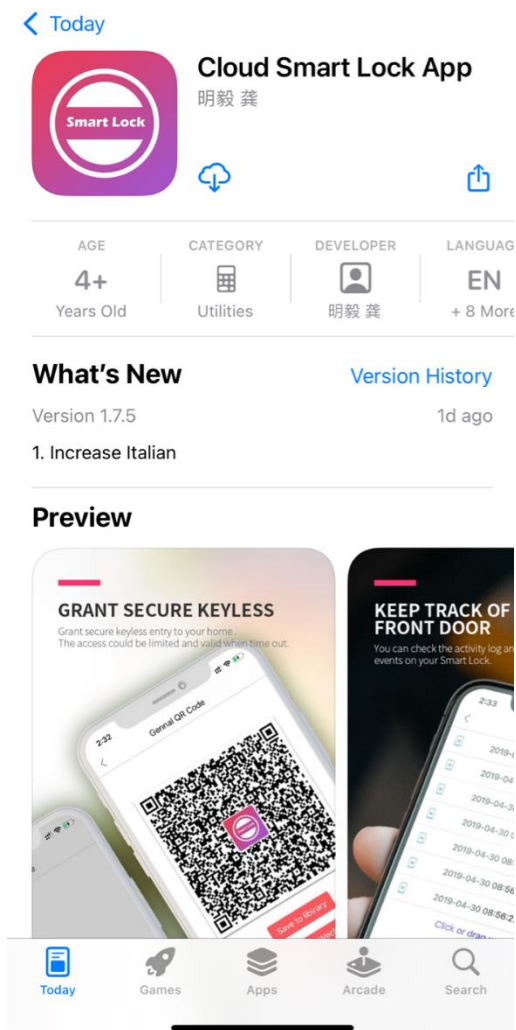
APP Download

Scan the QR code on the right or visit the website to download the app and register an account.

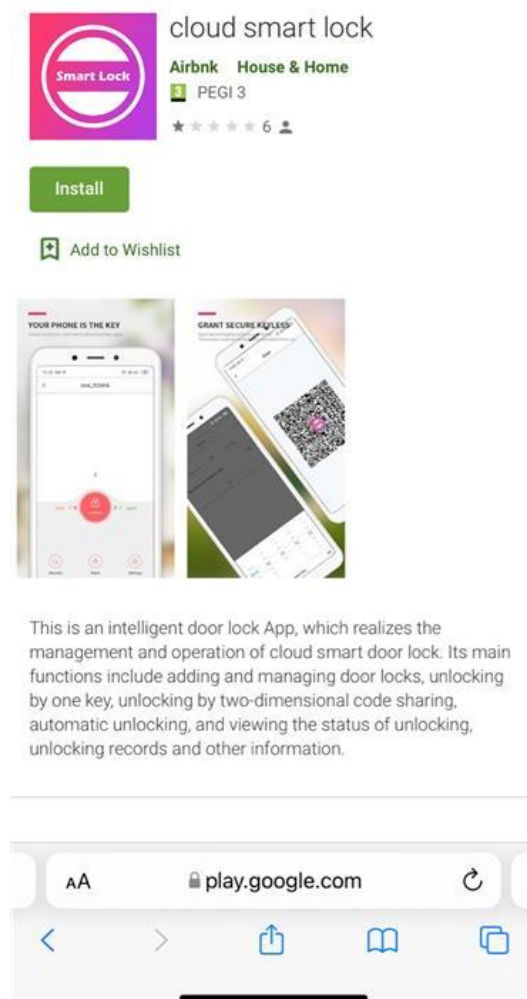


<http://www.cloudsmartlock.com/m/app.html>

IOS



Android

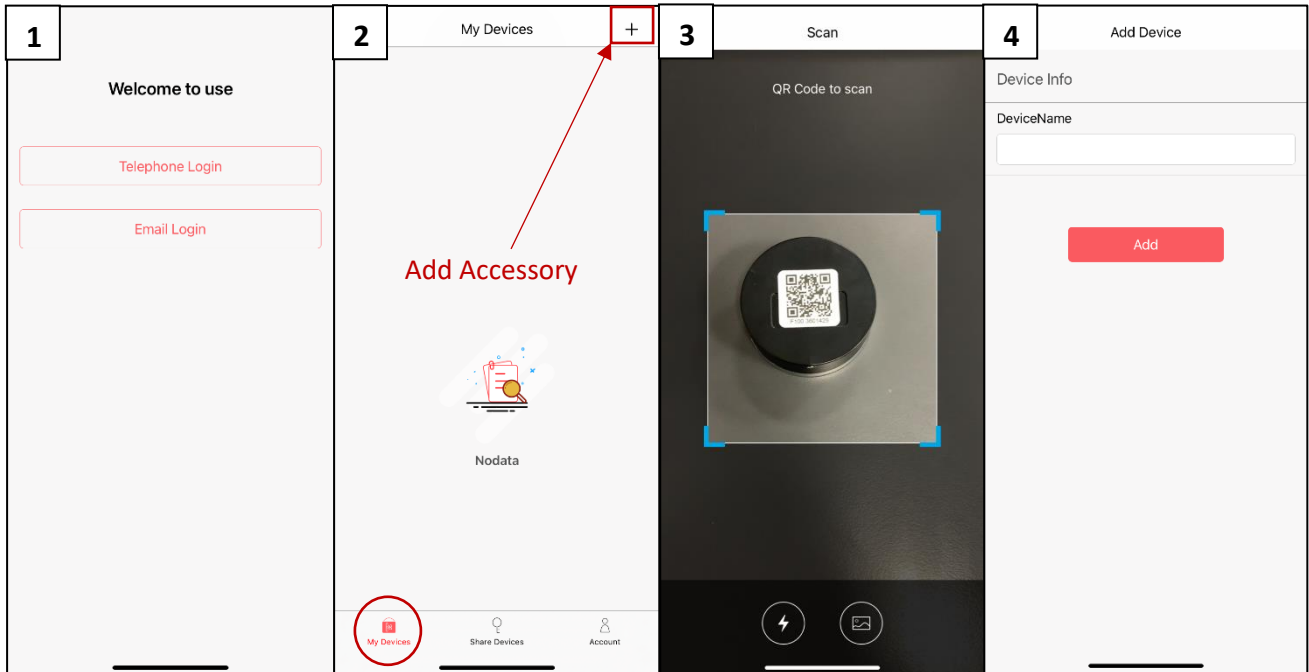


APP Operations



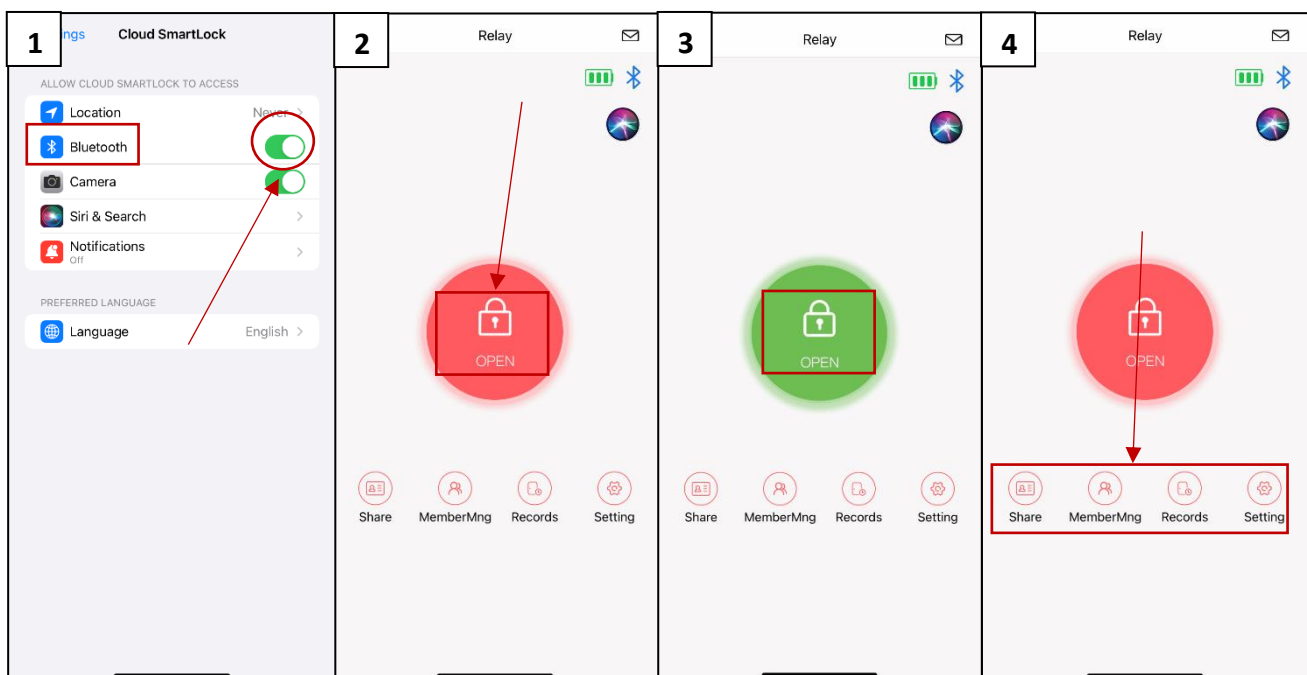
1. Add Accessory in the APP

To add an accessory, you must scan the QR code on the accessory.



2. Settings

Through the App, inside the device, you can activate the relay. The operation needs to be done via Bluetooth. Be sure to enable Bluetooth before starting the operation. Also, you can share the activation and allow other members to use it.



■ Installation

